

# BECOME A MEMBER OF HAVERING CHAMBER

**Are you looking for  
opportunities to grow your  
business and strengthen your  
network in Havering?**

If you are a forward-thinking business owner  
then become part of the Havering business  
community by joining the Havering Chamber.



**HAVERING  
CHAMBER**  
Supporting Business Building  
Community



- **Priority access to various events**
- **Monthly networking meetings**
- **Expand your professional network**
- **Explore possible collaborations**
- **Showcase your products or services**
- **A powerful voice for local businesses**
- **Contribute to shaping policies & decisions**
- **A supportive resource**
- **Enhance your credibility and visibility**

Join [haveringchamber.co.uk/member-benefits](http://haveringchamber.co.uk/member-benefits)

Email [enquiries@haveringchamber.co.uk](mailto:enquiries@haveringchamber.co.uk)

Phone **07917 821 137**

or scan / click the QR code



WEDNESDAY  
18 OCT 2023  
3:30pm-8pm



Welcome to the  
**HAVING**  
C H A M B E R  
2 . 0 2 3  
**BUSINESS**  
*ShowCase*

[www.havingchamber.co.uk](http://www.havingchamber.co.uk)

Having Indoor Bowls Club, Harrow Lodge, Hornchurch Rd RM11 1JU

## MESSAGE FROM THE CHAIR

This is my third Business Showcase since taking the Chair position back in 2020 and it certainly seems to come round quicker each year!

As a team, the Executive Committee of the Chamber, meet monthly to ensure that the organisation evolves and challenges itself, striving to increase its profile and membership.

During 2023 the Chamber has undergone a rebranding with a fresh new look which you will start to see appearing across our marketing together with the phased introduction of a new website on a new domain [www.haveringchamber.co.uk](http://www.haveringchamber.co.uk). We thank our committee member Bob Clark of Greenhouse Marketing for this. We also have an exciting timetable of events planned this year and next thanks to our member, and committee member, Ian Gorsuch.

Whilst our main focus is local Havering businesses, we also offer charity membership. This year we held events at St Francis Hospice, Havering Mind and First Steps. These are essential organisations within our community which it is our pleasure to support. We also donated to the Wennington fire victims, which although not essentially business, would have affected individuals' ability to carry out their trade.

Being affiliated with the London Chamber opens up a further host of events and contacts which are available to our members. Committee member Paul Mason-Hughes and I meet monthly with the London Chamber where we voice our members issues and concerns and receive policy updates. Recent Local meetings have addressed issues including high utility costs, skills shortages and the introduction of the ULEZ charge. The London Chamber lobby on our behalf demonstrating strength in numbers.

We also work alongside Havering Council with Councillor Graham Williamson, the appointed and active committee member. Councillor Williamson has assisted in providing local retail footfall figures and information on local economic developments.

The Havering Chamber offers unique business support, providing a platform for business growth and development, particularly during these challenging times for businesses post COVID.

For the showcase this year I would like to thank new members, Havering Indoor Bowls Club for access to the venue.

Thank you for joining us and I hope you enjoy our exciting timetable of speakers, exhibitors and, of course, free hospitality!



Janet Smyth, Chair, Havering Chamber



## SHOWCASE TIMETABLE

**3.30pm Showcase doors opens**

**4.00pm The Worshipful Mayor of Havering**  
officially opens the Showcase

**5.30pm** Welcome from **Mark Dover for Time 107.5**

**5.35pm Graham Williamson**, Havering Council  
Cabinet Member for Development & Regeneration

**5.45pm** Presentation by **ITS Technology, Invest in Fibre**

**5.55pm** Presentation by local businessman  
**John Tungatt, Director of Father Sons**

**6.05pm** Presentation by **Paul Roberts, ACAS**

**6.15pm** Presentation by **Martin Overare, Kenetix Leadership Consulting**

**6.30pm Buffet and drinks reception**

**7.30pm Raffle** in aid of the Worshipful Mayor of Havering official charity  
**'First Step'**

**8.00pm Showcase closes**



The Chamber would like to thank the following local organisations for supporting the 2023 Havering Showcase.

### Main Sponsors



### Exhibitors

ACAS

DOR-2-DOR

Essex Money

First Step

Havering Indoor Bowls Club

HumberJacks

ITS Technology

Joe Duffield

Kenetix

Lockfit

New City for Business

Newham College London

Oakleafe Claims

Rapid Office

Romford BID

Saint Francis Hospice

Spotclean

Stones 4 U

The Agency UK

TimeFM

## ABOUT THE CHAMBER

The Havering Chamber of Commerce was founded following the merger of the Romford Chamber of Commerce and Industry and Hornchurch Chamber of Commerce and Industry during the late 1980's. It is believed the Romford Chamber was founded pre-war whereas the Hornchurch Chamber was founded in 1946.

The borough has seen significant economic changes over the decades and the Havering Chamber has adapted to the evolving business landscape. Today, the Chamber remains an influential organisation, representing a diverse range of businesses across various sectors. It continues to provide invaluable support to its members through networking opportunities, business advice and advocacy.

As the borough of Havering continues to evolve and embrace new economic challenges, the Havering Chamber stands as a testament to the resilience and vitality of the local business community. Its mission remains to promote a positive, balanced, vital economy and preserve those unique qualities that are good for business and good for the community so making Havering a special place in which to live and work.

The Chamber is not funded to employ any full or part-time staff so is managed on a day-to-day basis by an executive Committee comprising volunteers from a range of Havering based businesses and organisations.

The Havering Chamber is affiliated to the London Chamber of Commerce & Industry many of their services are available to members of the Havering Chamber some without charge and others with discounts. The Chamber is also part of London's Local Chambers business network.



**HAVING**  
CHAMBER

Supporting Business Building Community

## New Look to Havering Chamber

You may have noticed that the 'Havering Chamber of Commerce and Industry' has rebranded as the 'Havering Chamber' with a new logo, domain and website.

Janet Smyth, Chair of Havering Chamber, says the reasoning behind the rebrand is to keep the Chamber relevant, "Whilst Havering is a historic area with long established industries we are also fortunate to have a dynamic business environment that is constantly evolving. At one end of the scale we have the possibility of the £5.3Bn Data Centre and at the other there are many, many entrepreneurs starting up new enterprises."

The rebrand was undertaken by Romford based Marketing & Design Consultancy Greenhouse Marketing. Director Bob Clark says the brief was very clear, "Chambers of Commerce tend to have a somewhat dated, stuffy brand image in general so it was important to make the Chamber appear more contemporary, inclusive, professional and relevant to the business community and residents of Havering in general. The new branding is distinctive and vibrant we did not set out to create a 'wall flower'. A good example of being more accessible is simply changing the website address from [www.hcci.org.uk](http://www.hcci.org.uk) to [www.haveringchamber.co.uk](http://www.haveringchamber.co.uk) and our aim has been to keep things relevant and simple. The website will be evolving over the coming months to become much more of a marketing tool for Chamber members as well as providing information on business opportunities."

If you have any ideas you would like to suggest for the Chamber or would like to get in touch with Greenhouse Marketing you can here:



**HAVING**  
CHAMBER  
Supporting Business Building Community



Bob Clark  
07702 379538

greenhouse  
marketing services

[bob@greenhouse-marketing.com](mailto:bob@greenhouse-marketing.com) [www.greenhousemarketing.co.uk](http://www.greenhousemarketing.co.uk)

# A Networking Date for your Diary

**Come along to the  
Chamber's November  
Networking Breakfast  
at Oakleafe Claims.**

**Wednesday 29 November  
8am to 9:30am**

Oakleafe Claims

9 Balgores Lane, Gidea Park, Essex RM2 5JS

Complimentary tea, coffee and pastries

Free to members and £10 for non-members

To book visit the Chamber website

[www.haveringchamber.co.uk/events/](http://www.haveringchamber.co.uk/events/)



Or visit Eventbrite



# 118 SECURITY LTD



24 HR CONTROL ROOM  
**0333 006 2371**



[www.118security.co.uk](http://www.118security.co.uk)

**KEYHOLDING – ALARM RESPONSE – MOBILE PATROLS  
LOCKS – UNLOCKS – VACANT PROPERTY INSPECTIONS  
DOG HANDLERS (K9 UNITS)**



**REGISTERED ADDRESS: 118 SECURITY LTD, RAINHAM HOUSE, NEW ROAD, RAINHAM RM13 8RA**

## SECURITY

## 118 SECURITY LTD

**YOUR SAFETY AND SECURITY  
IS OUR NUMBER 1 PRIORITY**

### SERVICES WE PROVIDE:

Keyholding / Alarm Response / Mobile Patrols / Access  
Property Checks / Security Guards / Dog Handlers

**\*\*RESIDENTIAL FULLY INCLUSIVE FOR £35.00 PCM\*\***

**\*\*COMMERCIAL FULLY INCLUSIVE FOR £50.00 PCM\*\***

### PLEASE CONTACT US FOR A QUOTE

Currently in a contract? give us a call to discuss options

**CONTACT - 0333 006 2371**

[www.118security.co.uk](http://www.118security.co.uk)





## Mullis & Peake LLP Solicitors offer a wide range of legal services for businesses and individuals, including:

- › Commercial and Residential Property
- › Contested Will Disputes
- › Corporate and Commercial
- › Court of Protection
- › Dispute Resolution
- › Employment Law
- › Family & Divorce Law
- › Family Mediation
- › Lease Extensions
- › Personal Injury
- › Will, Trusts and Probate

---

**Romford Office:** 8-10 Eastern Road, Romford RM1 3PJ | T: **01708 784000**

**Shenfield Office:** 194 Hutton Road, Shenfield, Essex CM15 8NR | T: **01277 245015**

**Upminster Office:** Suite 5, Essex House, 15 Station Road, Upminster RM14 2SJ | T: **01708 251560**

**Email:** [office@mplaw.co.uk](mailto:office@mplaw.co.uk)



**FOR LIFE, BUSINESS AND  
EVERYTHING IN BETWEEN**

Pinney Talfourd has an outstanding reputation for excellent legal advice and exceptional service to private and business clients. We offer a range of legal services to help support all stages of life. For further information, call one of our offices below, email [mail@pinneytalfourd.co.uk](mailto:mail@pinneytalfourd.co.uk) or visit our website.

Hornchurch	01708 511 000
Upminster	01708 229 444
Brentwood	01277 211 755
Chelmsford	01245 206 684

---

[www.pinneytalfourd.co.uk](http://www.pinneytalfourd.co.uk)



 resolution  
first for family law

# Havering Council is a proud sponsor of the HCCI business showcase

Our focus is to help businesses reach their full potential, especially through sustainable practices, and to help create an infrastructure that supports social and environmental sustainability.

We're providing training for Havering businesses on the fundamentals of sustainability, to help them adopt greener ways of working.

To find up more visit: [www.havering.gov.uk](http://www.havering.gov.uk)

We're also teaming up with Faster Britain, to help businesses regardless of size or sector to ensure you have the latest and best gigabit-capable connectivity to continue to cater for your customers.

For more information on how to sign up before the 2025 Public Switched Telephone Network switch off deadline, and how to access the fast and reliable fibre-optic network, please scan the QR code.

Faster  
Britain



Thank you to the HCCI for hosting this event  
and we look forward to meeting you all.



Havering Chamber  
of Commerce and Industry



Havering  
LONDON BOROUGH

# What have you got to lose?



It might not only be what, but who you lose as well. It is amazing how many people don't take an interest in the things they should.

## What do I mean? How about...

Looking at both why and how you do things.



Understand what you are accountable for and how it can affect you.



Know the things to put right.



Get the changes right, or you will be counting the cost.



Talking with the right people gets the best results.



Come talk to us for your best results.

[www.eyebay.com](http://www.eyebay.com)  
Tel: 020 3026 5600  
[enquiries@eyebay.com](mailto:enquiries@eyebay.com)



# Britain's Workplace Experts

At Acas we help organisations build positive workplace relationships to improve effectiveness and enable growth. We provide guidance on the latest employment legislation and best practice, provide practical training; and we help employers avoid and resolve disputes.

We help employers and employees by providing information, advice, training, conciliation and other services that prevent or resolve workplace problems.

Whether you're an employer who wants to make sure they're following employment law and good practice, or an employee who wants to understand your rights at work, we can help. There's no charge for most of what we offer.

acas working  
for everyone

We support good relationships between employers and employees which help organisations to thrive. And when there's a dispute we help by providing conciliation to resolve workplace problems.

We aren't on anyone's side - we tell you the facts.

Our expertise is based on millions of contacts with employers and employees each year. Acas experts often write the codes that people must follow in the workplace.

All of this adds up to Acas providing excellent value for money - for every £1 of taxpayers' money which Acas spends, there is at least £13 benefit to the economy.

# Marketing Your Business *Isn't Easy*

That's where we can help...

A professionally managed leaflet distribution campaign can bring you a wealth of new customers.

Get in touch today to find out how you can get started.

01708 294514  
romford@dor2dor.com

www.dor2dor.co.uk





# EM Essex Money

## Simple Smart Advice

Providing simple, smart mortgage advice  
throughout Essex & beyond

### MORTGAGES

Home mover advice  
First time buyer advice  
Remortgages  
Buy to let  
Specialist mortgages  
Bridging finance

### INSURANCE

Life insurance  
Critical illness cover  
Income protection  
Wills  
Buildings cover  
Contents cover

Get in touch today for a FREE consultation on 01708 918448



Scan this QR code to keep track of the value of your home. Enter your details to make sure that you never pay a penny more for your mortgage. If a better mortgage deal comes up, we will email you to let you know what you could save!

**First Step is a local charity which has supported families of babies and young children with special needs and disabilities for 35 years.**

**Families usually contact First Step at a moment of crisis, uncertainty and fear, often with underlying concerns about the health, behaviour or development of their child.**

**Alternatively, their child may just have been discharged from hospital with the parents reeling from the knowledge that their child has a special need and/or disability or are in the process of receiving a formal diagnosis of their child's condition.**

**At First Step, we build long-lasting relationships to support families on their potentially long and difficult journeys. We believe nobody knows a child better than their parents so our starting point is to actively listen and really hear their story.**



**For further details contact**

[www.firststep.org.uk](http://www.firststep.org.uk)  
[enquiries@firststep.org.uk](mailto:enquiries@firststep.org.uk)  
01708 556355

Registered Charity Number 1106002



# Havering Indoor Bowls Club




- Private Members only Club
- Licensed bar
- Social events
- Two elegant function suites
- 8 rink bowls green
- Bowls shop
- Café facilities
- Snooker room with 3 full tables
- Bowls classes for beginners

[www.haveringibc.com](http://www.haveringibc.com)

Tel: 01708 475722

**MOBILE AXE THROWING**



**Any Event Anytime** **Fully Insured**

**We Come To You!**

**Birthday's - Weddings - Stag's - Hen's**  
**Corporate Days - Private Functions**  
**League Days - Any Occasion**

**Call Us On:**  
**07710 426005**



Faster Britain powered by ITS Technology Group delivers full fibre connectivity to businesses across the UK.

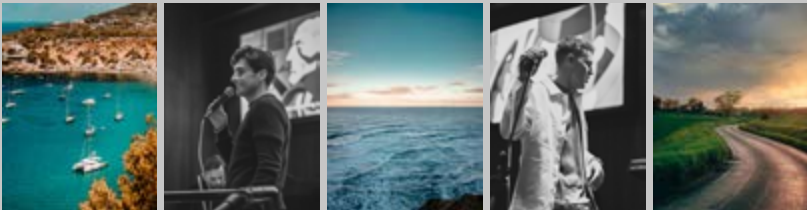
We're an open-access wholesale network and with more than 500 channel partners, you can access a range of business connectivity, IT and cloud services through industry-specific solutions. Our networks are wholly robust, reliable and scalable, meaning your business can access lightning-fast speeds, future-ready infrastructure and increased productivity for your team.

We have a national presence with more than 80 networks already live across the region. Our re-use approach means that you can access our gigabit-capable network without worrying about the disruption it will have on the environment.

**For more information, head to [fasterbritain.com](http://fasterbritain.com)  
6600 Cinnabar Court, Daresbury Park. WA4 4GE**

*Joe Duffield*

PHOTOGRAPHY & VIDEOGRAPHY



**LANDSCAPE - TRAVEL - CORPORATE & EVENT  
PHOTOGRAPHY & VIDEOGRAPHY**

SCAN ME



## Our Areas of Expertise

**KENETIX**  
Leadership Consulting

Values-driven leaders come to us for strategies and solutions for developing their leaders, teams and organisations. We support our clients in the following core areas:

### Leadership

*Leadership Development and Coaching Programs*

### Teams

*Team Strengths Assessment and Experiential Training*

### Communications

*Workshops to Increase Communications Impact*

### Culture & People

*Culture Building and People Engagement Tools*

"The communication impact assessment is a must for all teams and leaders who work in an environment that requires high levels of communication and collaboration. It helps you understand the communication styles of your team members and how they relate to each other."

Amanda Quowell, HR Development Manager  
SHCS

"This workshop was both fascinating and nerve-racking. Learning about the communication styles of everyone in the team and how to more effectively interact with them will prove to be very useful indeed."

Ray Hebbard, CEO  
Learning Connections

"The masterclass on the 12 invaluable Laws of Growth was quite helpful to delve further into the diverse ways to apply the individual laws in order to enhance my personal growth. It was so encouraging to realize some of the challenges I face are not personal and I am not alone."

Tini Wadgate, CEO  
Twin in Academy

Website: [www.kenetix.co.uk](http://www.kenetix.co.uk)

Email: [martin@kenetix.co.uk](mailto:martin@kenetix.co.uk)

Mobile: 07733 008635

Established in 2013, K Bater Consultancy provides human resource support, advice, and solutions to small and medium sized businesses across the UK.

Employing people can be challenging, and the complex nature of employment law means that failing to manage HR correctly brings with it considerable financial, reputational, and operational risk. At K Bater Consultancy we are experts in advising, guiding, and supporting businesses as they navigate the legal and technical minefield that employment and HR can sometimes be, as well as in helping them attract, recruit, and retain the right staff for their business.

### Our Services include but not limited to:

- Human Resource Support, Guidance and Mentoring
- Training & Development
- Business Start-Up Tool Kit
- Absence, Holiday, and Document Management
- Human Resource Documentation

**K•Bater**  
Your HR expert

Telephone: 01708 961879

Email: [Kelly@kbaterhr.com](mailto:Kelly@kbaterhr.com)

Address: 110A North Street, Hornchurch, Essex RM11 1SU

## I'm your local trusted Hornchurch Locksmith

I provide a friendly, reliable, and professional locksmith service across Hornchurch and the surrounding areas, including Romford, Dagenham, Rainham and Upminster. I cover all types of locksmith work including burglary repairs, lock changes & lock repairs, lock-outs, emergency entry and more.

- ✓ No call out charge – pay ONLY when the problem is solved
- ✓ Available 24 hours a day, 7 days a week
- ✓ Fast response– Normally 15-30 minutes
- ✓ Card payments accepted
- ✓ Get a fixed price quotation and know exactly what you will pay
- ✓ We will NOT add 20% VAT to the price
- ✓ We are not a call centre – call now to get through to a professional locksmith



Telephone: 01708 691 621

Mobile: 07932 552300

Email: [gary.wraight@lockfit.co.uk](mailto:gary.wraight@lockfit.co.uk) Website: [www.lockfit.co.uk](http://www.lockfit.co.uk)

## New City for Business

*Working in partnership with you to  
achieve workforce optimisation.*

- Bespoke training solutions
- Online courses
- Experts in education
- Flexible & affordable CPD packages

f @ t d

t: 0330 135 9000

e: [info@nccclondon.ac.uk](mailto:info@nccclondon.ac.uk)

[www.newcityforbusiness.co.uk](http://www.newcityforbusiness.co.uk)

Book your  
**FREE**  
consultation





# Award winning Insurance Claims Management

UK's Leading Loss Assessors



**In the event of a Claim  
Remember the name**

[www.oakleafe.claims](http://www.oakleafe.claims)

0333 2101 999



**RAPID  
OFFICE**

Rapid-Office is an industry leading office furniture Supplier, providing you with only the very best in office furniture.

Please Contact us today for a free Quotation.



# Working Together

**Follow us on social media to keep up to date with events and projects.**

-  @RomfordBusinessImprovementDistrict
-  @Romford\_BID  @romford.bid
-  [www.romfordbid.co.uk](http://www.romfordbid.co.uk)
-  [hello@romfordbid.co.uk](mailto:hello@romfordbid.co.uk)

Saint  
Francis  
Hospice  
Caring for you



## Great Care is our Mission

Saint Francis Hospice specialises in providing care for any person, from any faith or cultural background, who have been diagnosed with a serious illness who are living in Havering, Brentwood, Barking and Dagenham, Redbridge or West Essex.

The hospice team provide care for people at the end of life, at home and at the hospice. We assess and address spiritual needs, linking in with local religious leaders and we do our best to accommodate any specific dietary requirement, custom or ritual that needs to be upheld.

Often family and friends provide the bulk of care, this can be emotionally and physically hard. If you are caring for someone who is nearing the end of life we are here to stand by your side, supporting you with experience and care.

Because Saint Francis Hospice is an independent charity, there is no cost if you need our services, nor to the people who care for you and about you. Kind and generous gifts from local people, companies and schools help make sure that everyone who is under the care of Saint Francis Hospice has round-the-clock support.

To provide this dedicated and expert care, the hospice needs to raise over £8 million each year because only 28% of our costs are paid by the government. Individuals in need of our services and the people who love them, also depend hugely on 870 skilled and committed volunteers. These wonderful people help keep costs down and bring huge joy and support to those who need our care, their loved ones, families, staff and volunteers.



**Discover our full story at [www.sfh.org.uk](http://www.sfh.org.uk)**

**Spotclean Limited is a commercial cleaning company specialising in deep, sparkle and regular premises cleaning and maintenance.**

**We primarily work with facilities management companies and within the property services sector in general throughout Essex and Kent.**

**We are SafeContractor certified, Citation Managed Health and Safety and we are a member of the British Institute of Cleaning Science (BICSc.)**

Our cleaning services cover:

Office premises

End of tenancy cleans - move in/out

Communal area maintenance

Post builders and post construction cleanup

School premises

Carpet deep cleaning/shampoo

Window cleaning

Residential property

Retail shops

Hotel housekeeping

Health Care premises

On-sale properties

Event cleanup

... and many more.

For enquiries please contact us on 020 7183 1955 or 07940 213 394



50 Cambridge Road, Barking, IG11 8FG

admin@the-spotclean.com

www.the-spotclean.com



**Come Direct to Stones4u and make your budget go further...**

- Family run business with over 20 years' experience
- We cover the whole of London and outside M25
- Specialists in Quartz, Granite, Marble & Limestone
- Kitchen worktops
- Window sills
- Bathrooms
- Fireplaces
- BBQ areas
- 5-7 days from template to installation

**STONES4u**  
Luxury Stone for Kitchens & Bathrooms

*Make your dreams a reality for less*

stones4u.uk



Unit 17, Galley Hill Yard, Galley Hill, Waltham Abbey, Essex EN9 2AG  
M: 07737 914 146 | T: 01992 713840 | E: info@stones4u.uk



Office: 01708 202 577

Mobile: 07833 060 727

ross.clark@theagencyuk.com

[www.theagencyuk.com](http://www.theagencyuk.com)



THE AGENCY UK

- ✓ Personal service from For Sale to Sold
- ✓ Accompanied viewings 7 days a week
- ✓ Available outside of office hours
- ✓ Local knowledge and experience
- ✓ Rightmove and Zoopla advertising
- ✓ Rightmove premium displays
- ✓ Social media advertising
- ✓ Honest and constructive feedback



How much equity  
is in your home?

*Ross Clark*

Your local, personal and dedicated

**ESTATE AGENT**



**Havering's All Time Favourite  
independent local radio station  
covering Havering, East London &  
parts of Essex.**

NEWHAM  
COLLEGE  
LONDON



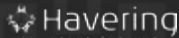
**Free**

# e-Business Support

**Website and Content Management, SEO,  
Digital Business Tools**



For more information please contact:  
[e-business@newham.ac.uk](mailto:e-business@newham.ac.uk)  
020 8257 4204



Barking &  
Dagenham



**You look after  
them, we look  
after you.**

### Our foster carers receive:

- Extensive training and support package
- Council tax relief for active foster carers inside and outside the borough
- Free parking in selected areas
- Tax free support\*
- Free green bin collections
- Referral bonus of £750
- Free leisure centre access for the family

Find out more today at  
[havering.gov.uk/fostering](http://havering.gov.uk/fostering)  
01708 434574



\*up to £10,000